













Working instruction for updating i-move 2.5B Motor to H/L Version

1. Tools List For Operation

Item	Tools Name	Quality	
1	Short cross screwdriver	1	
2	Electro drill, and Long cross screwdriver head	1	
3	Pipper pliers	1	
4	Cutting nippers	1	
5	Universal joint with screwdriver bits	1	
6	Plastic component boxes	1~2	

2. The material list for upgrading H/L version:

(K1.S.119.0036.1, KIT BOM for i-move25B H/L version upgrading)

No.	PN	Part Name	P/U	Picture
1	S.119.0036.0	MOTOR AND MOTOR HOUSING ASSM	1	
2	S.119.0139.797	KIT ASSY CONTROL BOX I-MOVE25 H/L VERSION	1	
3	119.0099.0	KIT EVA SEAL FOR HOSE INSERT DUPRO	1	
4	119.0034.0000.01	i-move25B H/L version user manual	1	
5	72.0209.0B	sealing gasket EVA 3x1.5x593mm	1	
6	119.0136.0	EVA sealing 10x22x1.5mm	2	



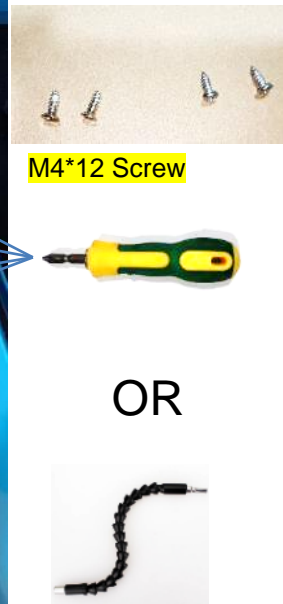
Our new motor (RH):
DC28V, 240/300W,
H/L control



1. Take one machine on table, take off the cotton cushion.
2. Take out the 4x screws in red mark and keep the 4x screws.



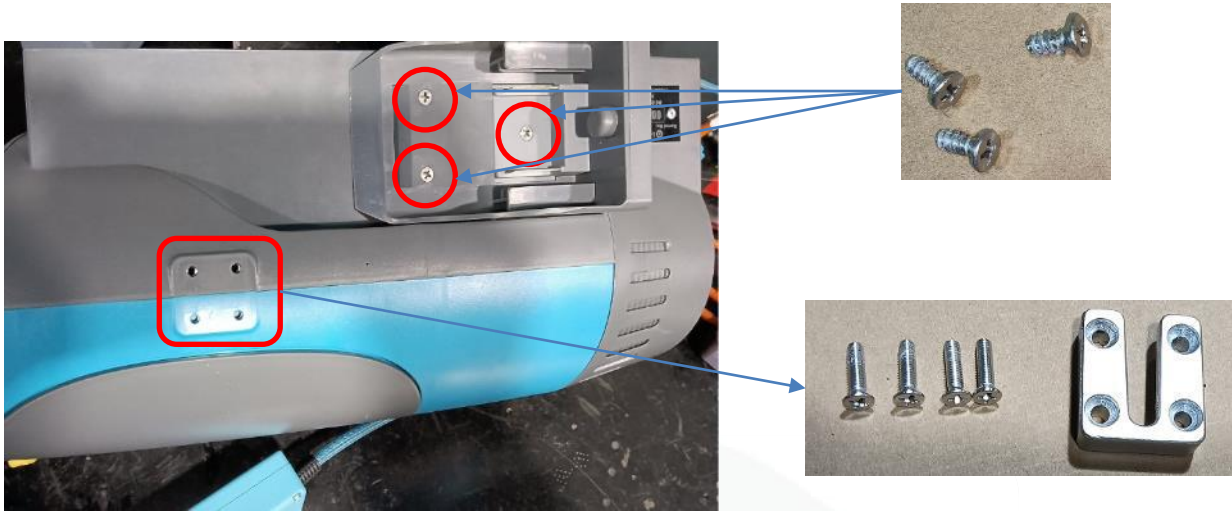
3. Open the front door.
4. Put down the body, take out the paper bag.



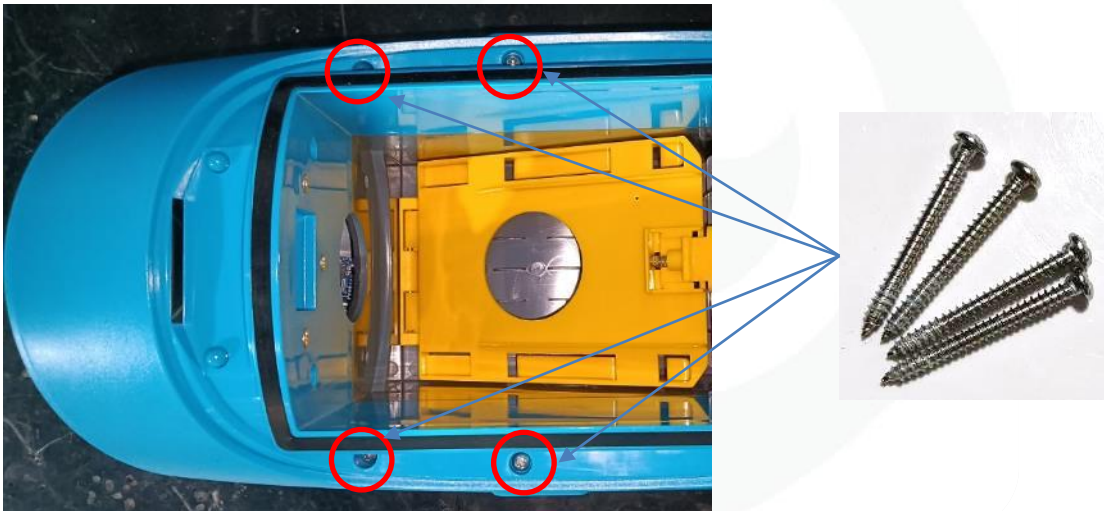
5. Put down the body yellow paper bag holder plate. 6. Take off the 2+2 screws by short cross screwdriver. And open the top cover.



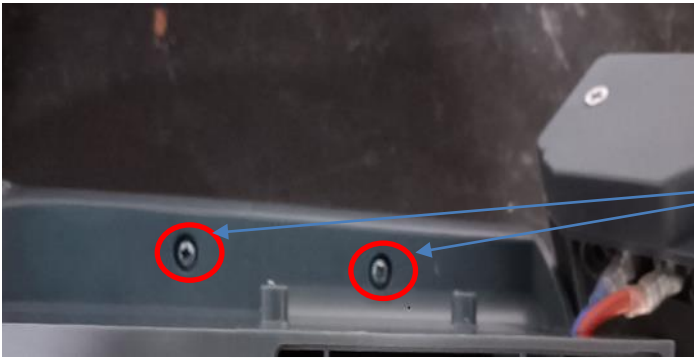
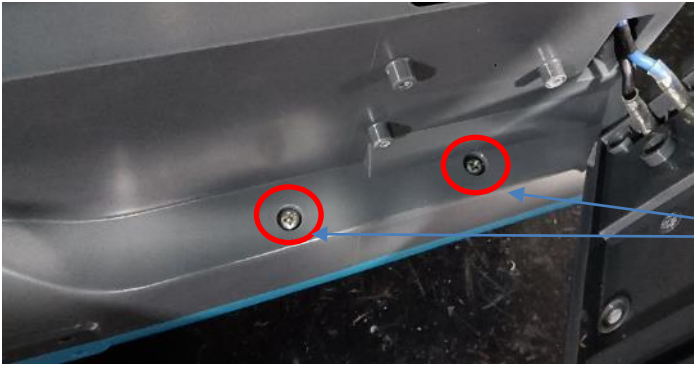
7. Take out the filter and keep it. 8. Take off the 4x screws and 3x M4*10 Screws, and keep them in one box.



9. Turn to the other side, take off the 4x screws and 3x M4*8 Screws, keep them in one box.



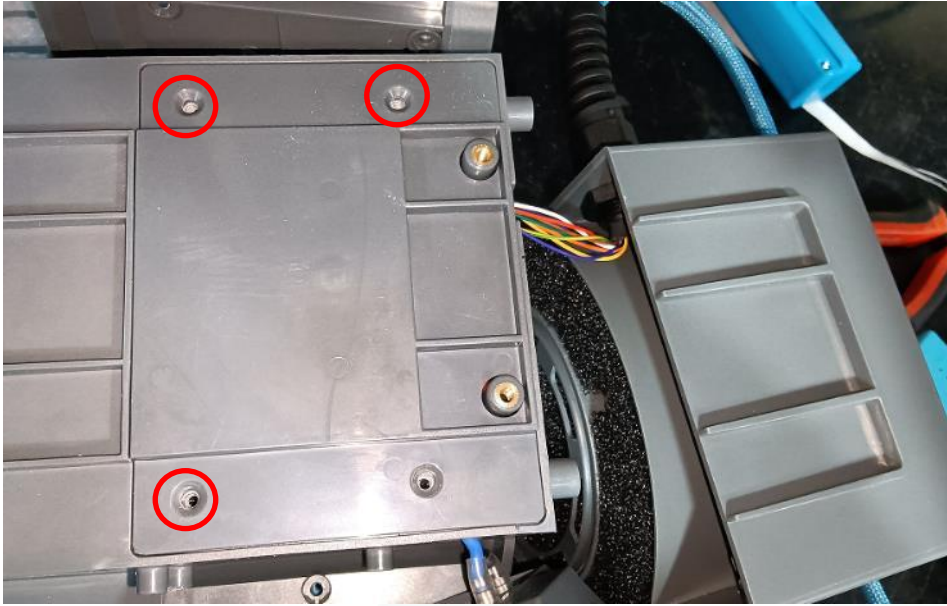
10. Place the body and take out the 4x screws from front side, and then keep the screws.



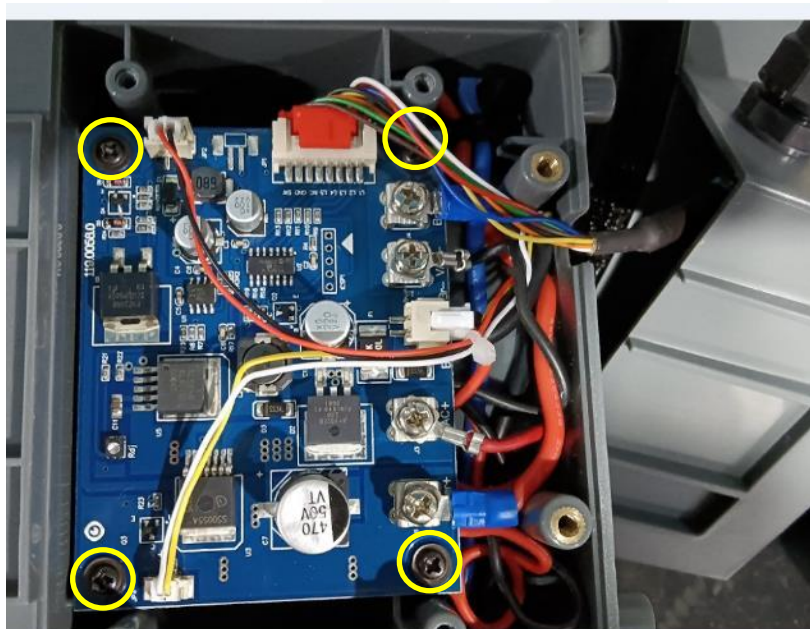
11. Take out the 4x screws for the back housing, and keep the 4x screws.



12. Take out the 8x screws by long shaft head screwdriver, keep the 8x screws.



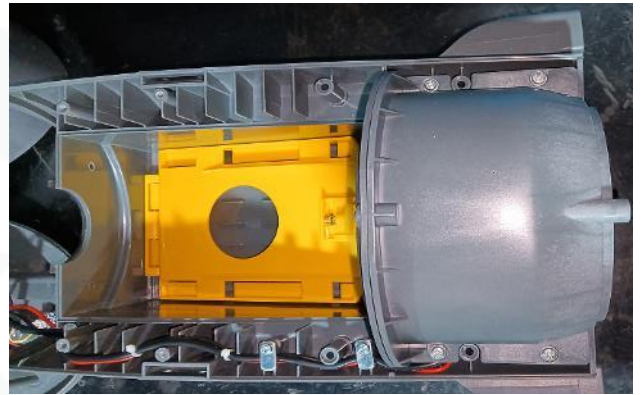
13. Take out the 4x M4*8 Screws and keep them.



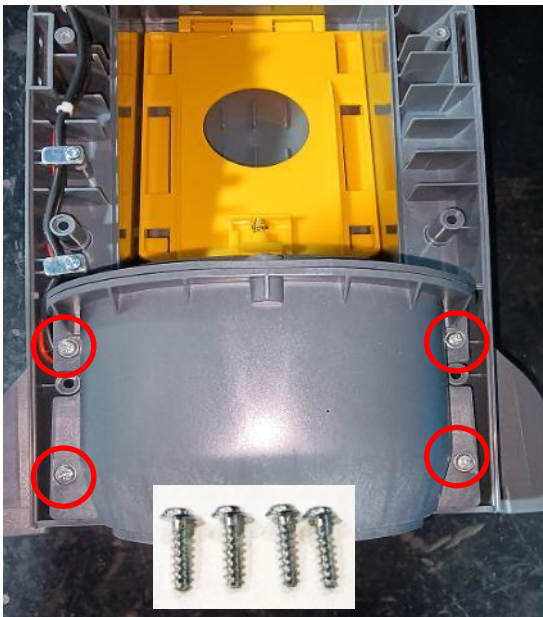
14. First take out the 4x M4*8 terminal screws, and then take out the 4x Black M3*8 screws for PCB board. Please keep them for next use.



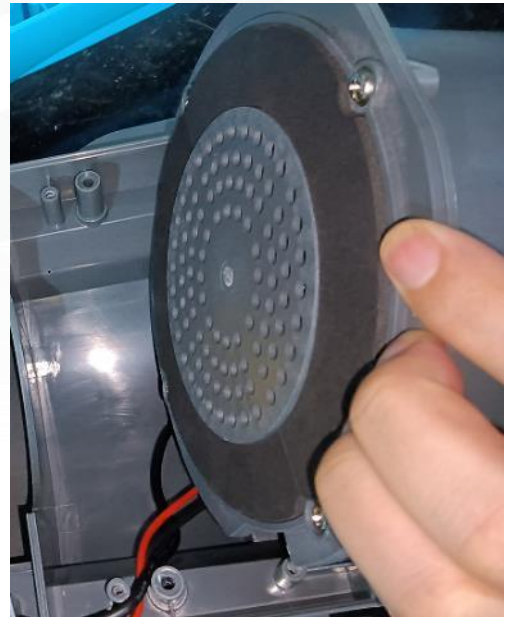
15. Pull out all connecting terminals, and take out the PCB board and keep it .



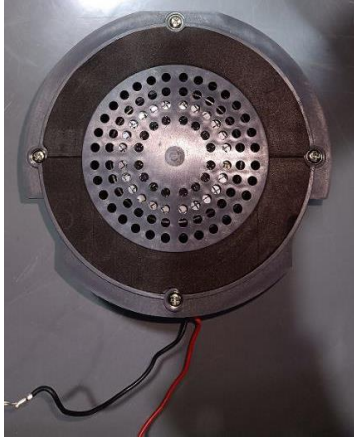
16. Take out the front housing from body.



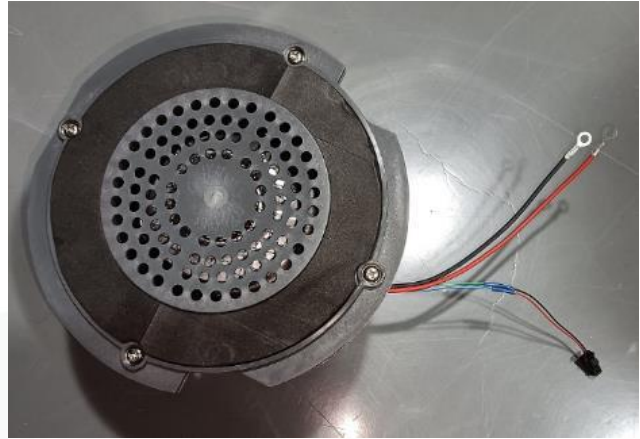
17. Take out the 4x M4.2*16 Screws for Motor housing and keep the screws.



18. Pull out the motor housing from body.



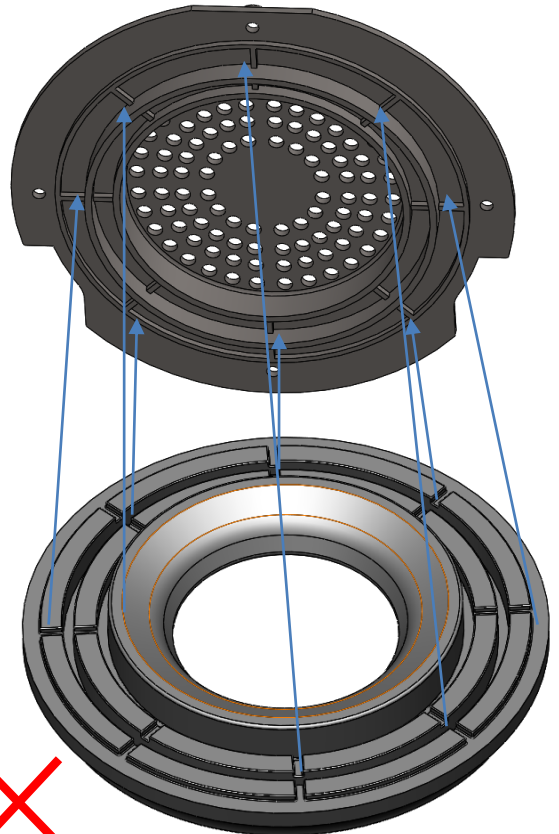
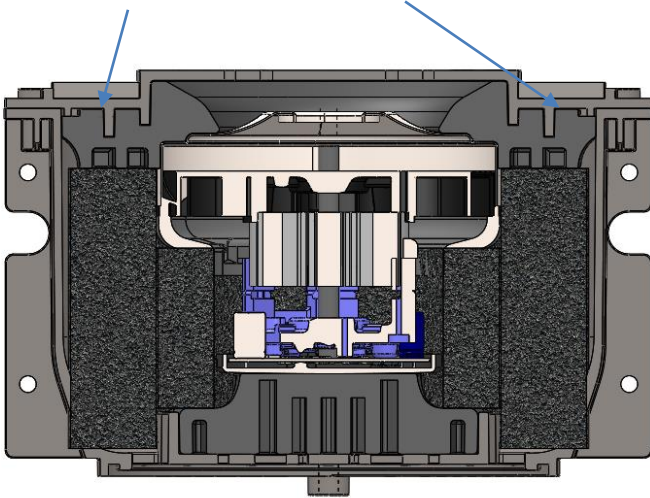
(old, 2x wires)



(New, 4x wires: 2x for power supply, 2x for H/L control)

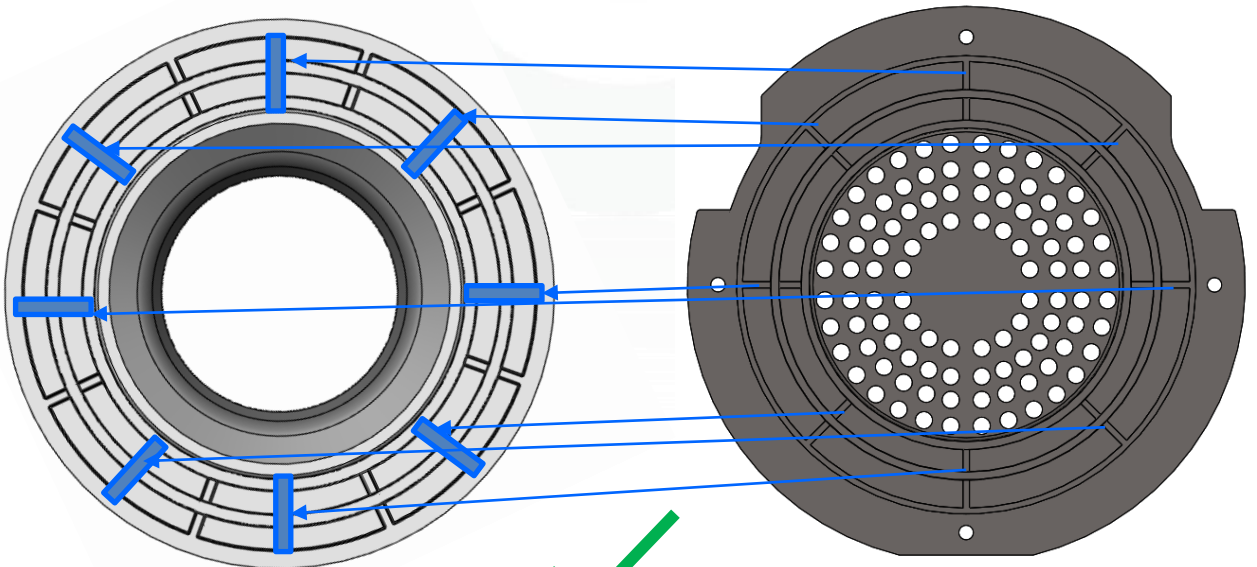
19. Take a new H/L version motor housing unit, and check the inside motor top rubber if it is assembled correctly: Open the cover of motor housing, The ribs of motor housing cover and the slots must be misalignment assembly.
For more detail, please see the next page.
If the assembly is correct, please jump this step.

Avoid the air leakage from here.



Wrong

Do not make the motor housing cover ribs to align with the slots of motor top rubber.



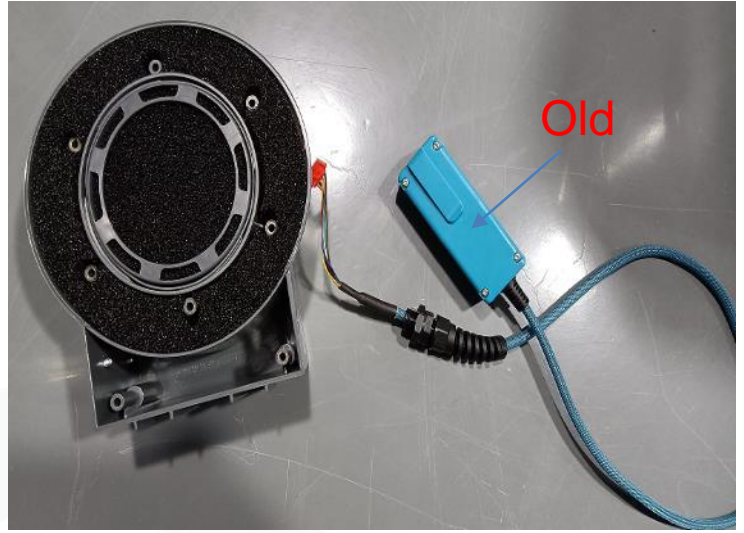
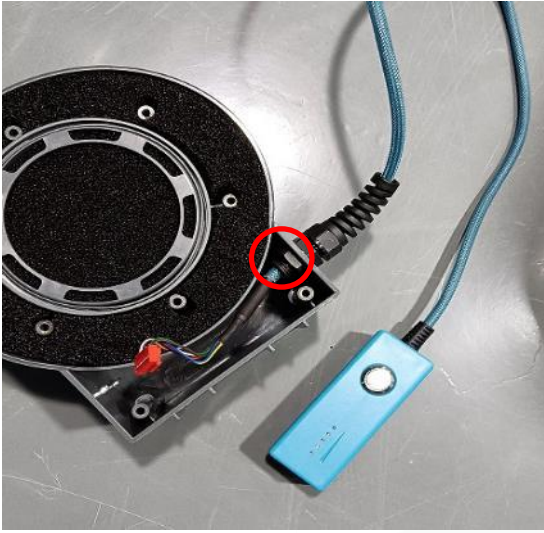
Correct

Notes: Motor housing cover and top rubber assembly.

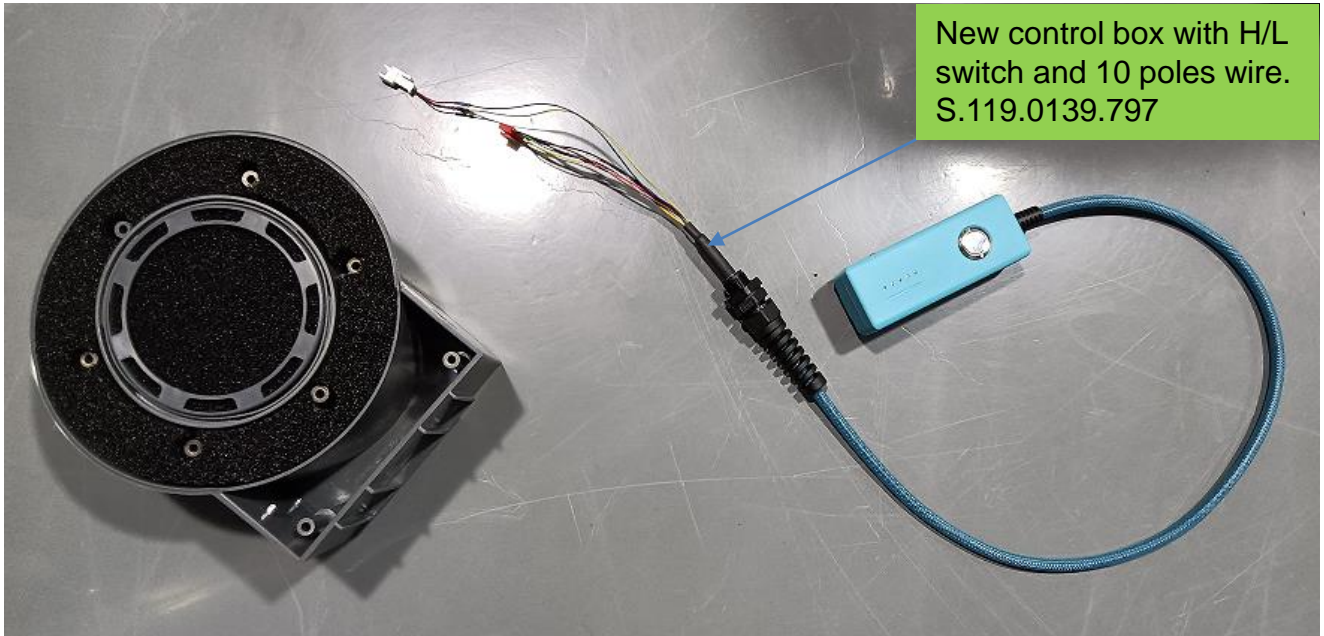
To make motor housing sealing, need make the ribs and slots to misalignment assembly.

The ribs of motor housing cover must be misaligned with the slots of motor top rubber.

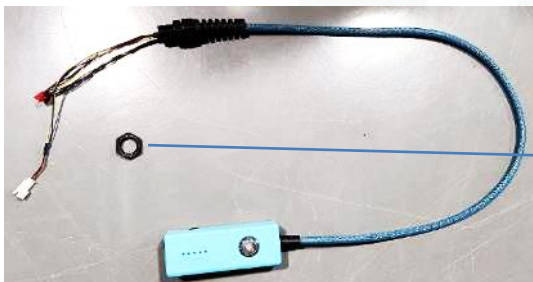
23 degree will be better.



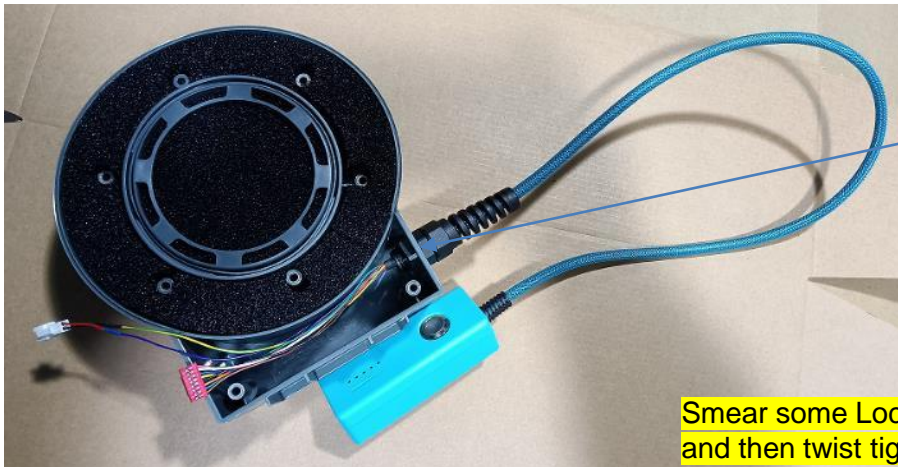
20. Take out the old control box from the bottom unit by twisting out the plastic nut.



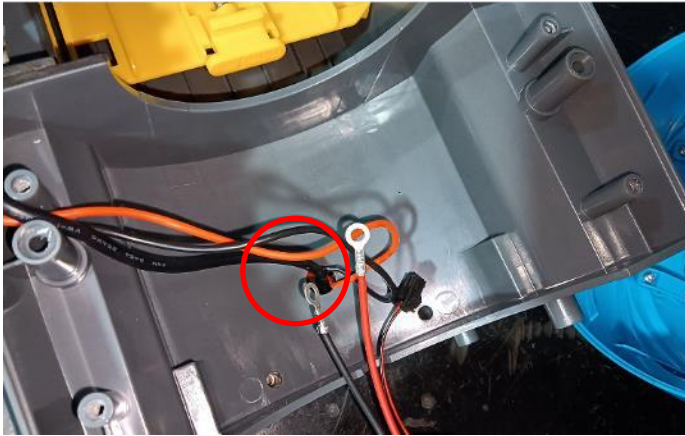
21. Take out the old control box from the bottom unit by twisting out the plastic nut.



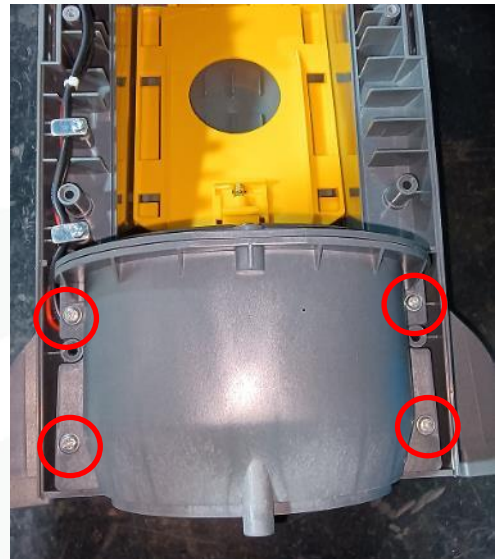
22. Twist out the plastic nut and then pass the wires through the bottom housing side hole, Smear some Loctite 648 for the round thread first and then twist tight for both side nuts for the cable connector.



Smear some Loctite 648 for the round thread first and then twist tight for both side nuts.

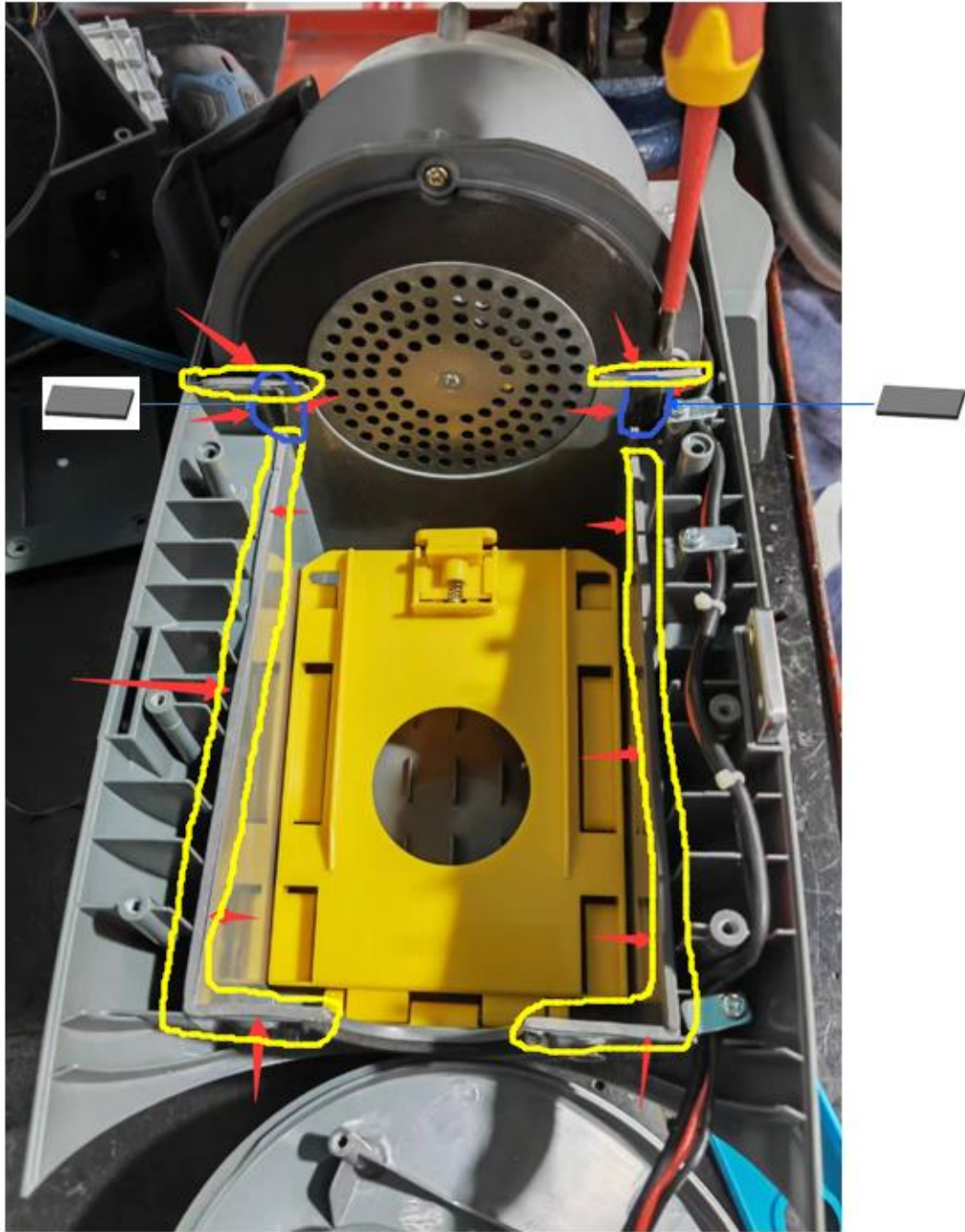


23. First pass through the 4x wires for the hold of back body, and put back the new motor assm.



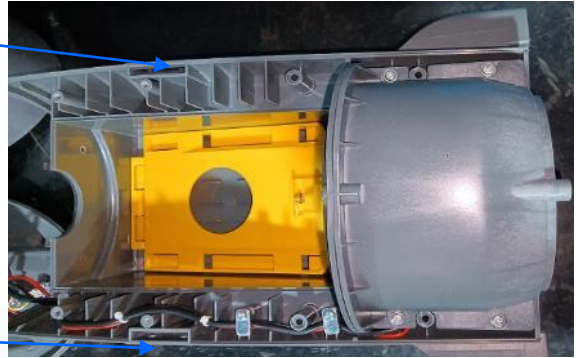
SCREW ST4.25 X 16 FLANCH HEAD
00.0002.3

24. Fit back the 4x screws for motor housing in back body.

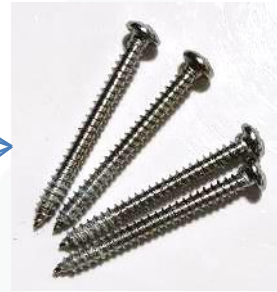


25. Paste the EVA sealing strip for the back body as the picture shown:

72.0209.0B sealing gasket EVA 3x1.5x593mm, 1pcs
119.0136.0 EVA sealing 10x22x1.5mm, 2pcs

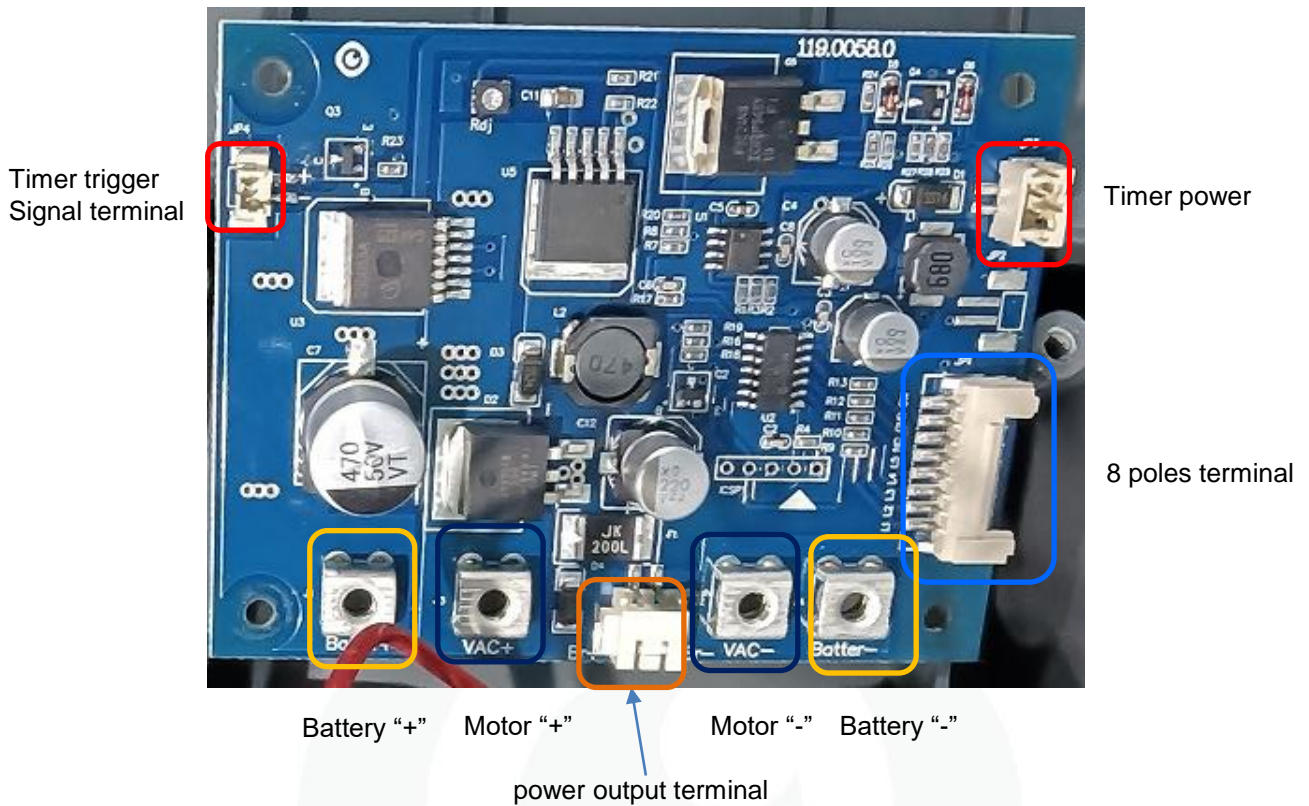


26. Put the 2x aluminum plates back for front housing and put back the front housing for body.

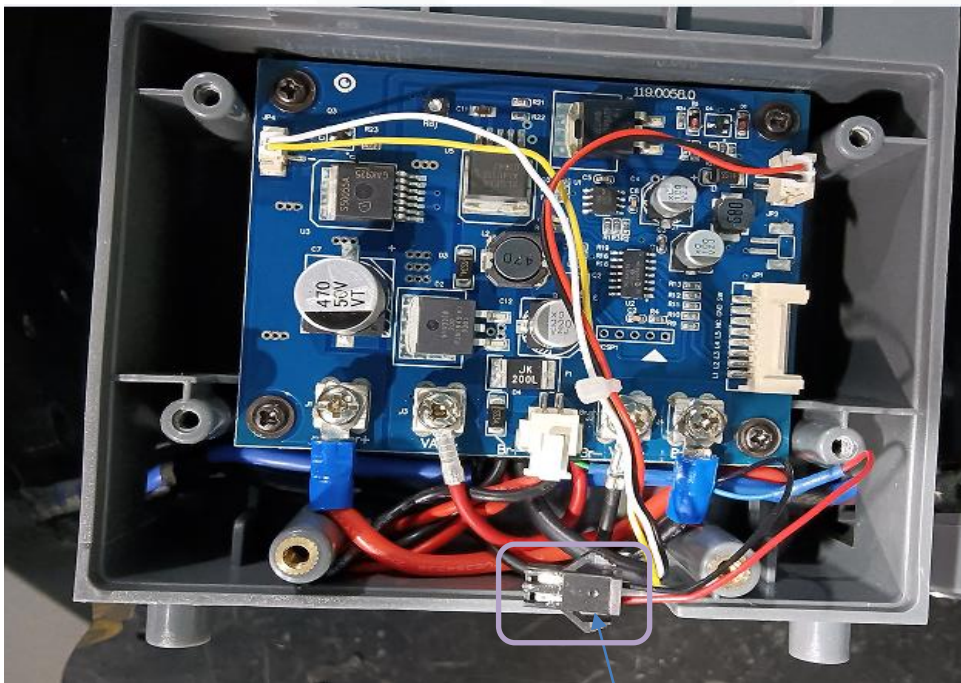


M4x40 PAN HEAD SELF-TAPPING SCREW
119.0067.0

27. Fit back the 4x screws for the front housing.



Main PCB board connecting ports description

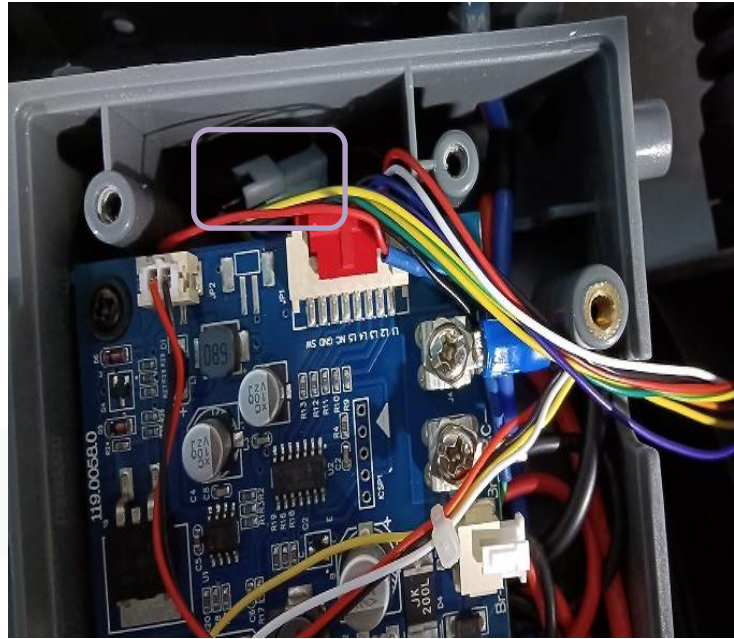
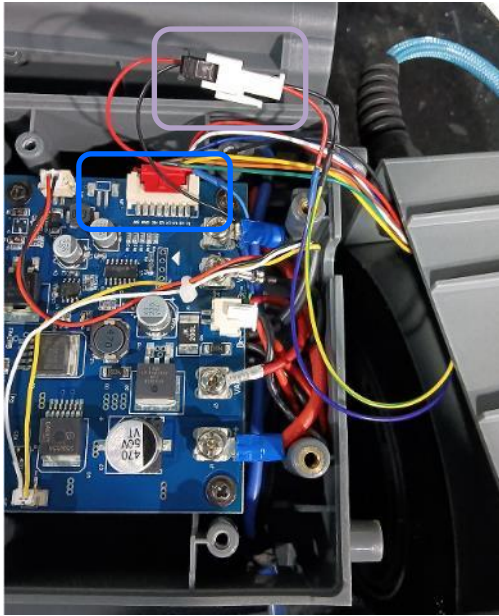


SCREW ST3 X 10 CROSS
HEAD WASHER BL-NI
85.1035.0

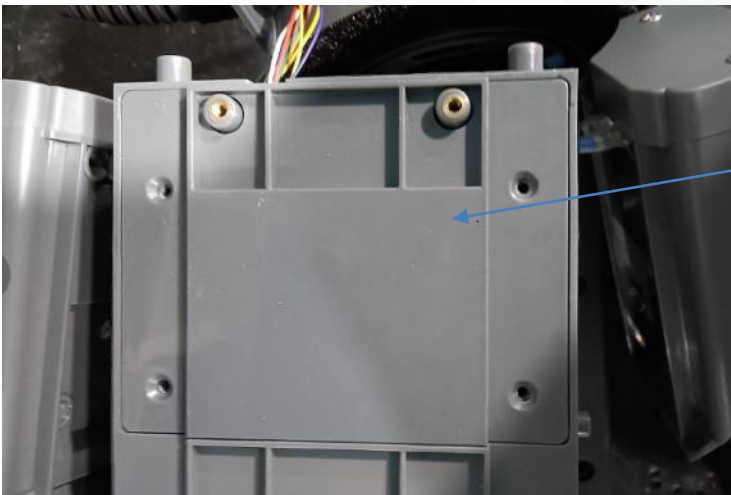


Motor H/L control connector

28. First adjust the wires length and put back the PCB board, fit the 4x terminal screws, then fit back the 4x black screw for back body housing.



29. Connecting the 8 poles terminal and motor H/L control connector, place the connector to the conner.



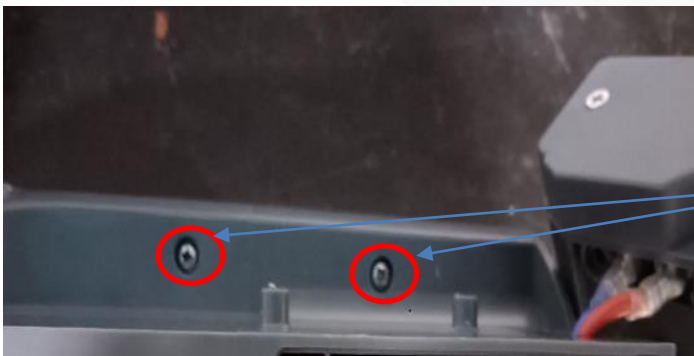
M4*10 FLAT HEAD SELF-TAPPING SCREW
119.0066.0

30. Put the back cove plate for body and fit the 4x screws back for the small cover.



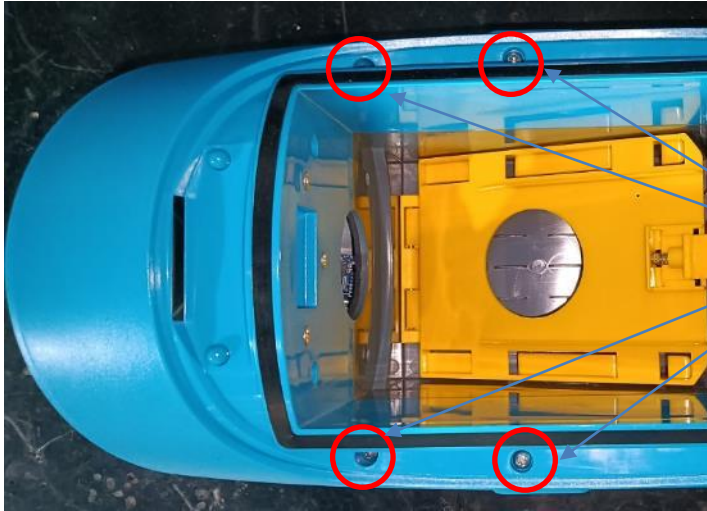
M4x40 MACHINING SCREW
119.0065.0 (8x)

31. Fit the 8x screws back for bottom unit.



M4x40 PAN HEAD SELF-TAPPING SCREW
119.0067.0 (4x)

32. Fit back the 4x screws for back side of body both sides.

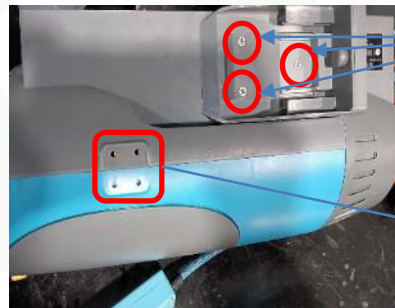


M4x40 PAN HEAD SELF-TAPPING SCREW
119.0067.0 (4x)

33. Turn to front side and fit back the 4x long screws for front housing.



M4*10 FLAT HEAD SELF-TAPPING SCREW
106.1111.28 (6x)



SCREW M4X16 CROSS FLAT HEAD
MACHING THREAD SST
121.0098.0 (8x)

34. Fit back the 3x M4*10 screws for battery holder and fit back the tools hooker, Also, the same assembly for other side.



KIT EVA SEAL FOR HOSE INSERT DUPRO
119.0099.0 (1x)

35. Put the machine upright, Check the o-ring EVA seal, if it is damaged, Please take off and paste a new one.

Top cover



M4*12 FLAT HEAD SELF-TAPPING SCREW
106.1111.28 (2x)

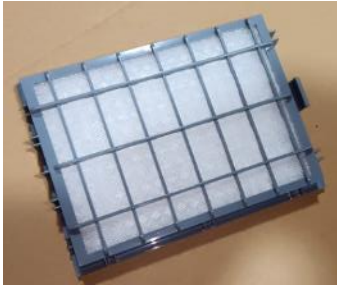
M4*12 PAN HEAD SELF-TAPPING SCREW
106.1111.24 (2x)



OR



36. Put back the top cover and fit 2x M4*12 flat screws and 2x pan head screws.



37. Put the filter and paper bag back for body.



38. Put the front door back for machine.



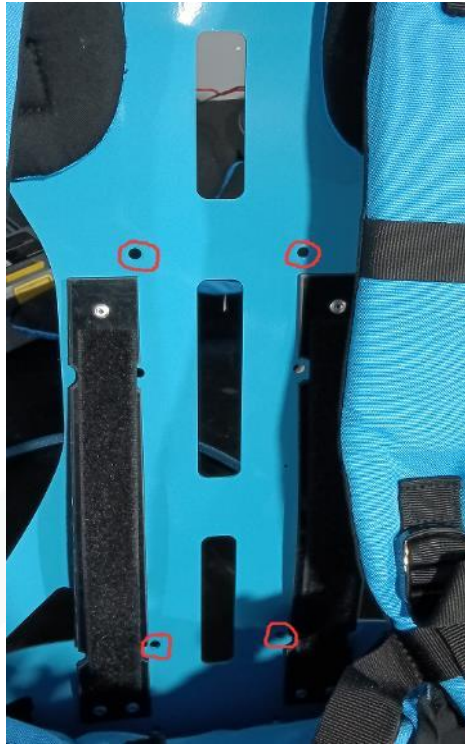
39. Install 2x i-power8.7 batteries for test.



40. Insert 2x ipower8.7 batteries and then test the suction power:

15.0~16.0Kpa(L), 17.5~18.0Kpa(H)

After tested, please take out the batteries from the machine.

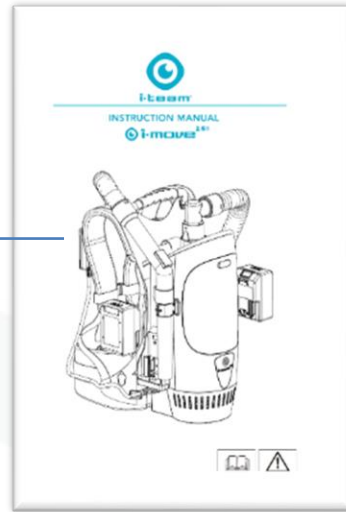


SCREW M4X8 CROSS HEAD
WITH FLANGE NORMAL STEEL
121.0100.0 (4x)

41. Fit the harness for the back side as the screw holes shown, 4x M4*8 screws.



42. Paste back the cotton cushion for the harness. 43. Collecting the belts and cotton cushions.



119.0034.0000.01

44. Change the old user manual in new version one.



**THE END
THANK YOU**